

## Questions you may have!

### What should I bring?

- Modest clothes (see our website for more details), swimsuit, nice clothes for two evening meetings if you wish
  - Bible, Pen/Pencil
  - Music instrument (optional)
  - Toiletries (shampoo, soap, toothbrush), towel
  - Bedding/Sleeping Bag, pillow
  - Tennis shoes, flip flops
- Money for offering, snacks, and store

### What should I *NOT* bring?

Please do not bring electronic devices of any type. Any electronics that are brought will be handed into the Director to be returned at the end of your week of camp.

Prohibited: any type of weapon, drugs, alcohol, or tobacco products

### Can I send my camper mail?

**YES!**

We recommend mailing a few days before your camper's week.

Please mail to:

Camper Name/(camp week)  
Bethel Bible Camp  
PO Box 40  
Wellfleet, NE 69170



**Registration is from  
4:30-5:30pm on the  
first day of each camp**

**All camps end on  
Saturday at 10:00am**



Donations help keep camp fees low!  
Please call (308) 963-4334 or see our website for a list of our current needs.  
You may donate online or by mail, please make checks payable to Bethel Bible Conference.



### Fun Things to do!

- |              |                     |
|--------------|---------------------|
| Ga-Ga Ball   | Hot Dog cookout     |
| Nine Square  | Carpet Ball         |
| Hiking       | Campfire            |
| Swimming     | Hay wagon ride      |
| Recreation   | *High School only   |
| Float Trip*  | ** Junior High only |
| Night swim** |                     |

**Bethel Bible Camp**  
**PO Box 40/ 711 Mississippi Ave**  
**Wellfleet, NE 69170**

### CONTACT US

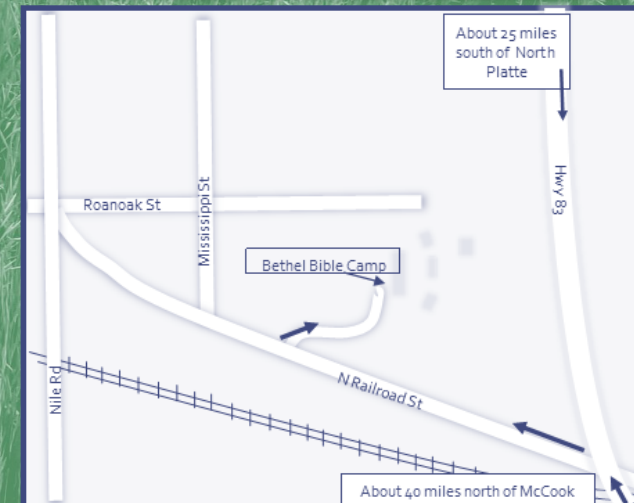
**308-963-4334**

**camp@bethelbiblecamp.org**

**Facebook: Bethel Bible Conference**

**www.bethelbiblecamp.org**

**Director: Kevin Domes**  
**425-308-4203**



# 2024 Camp Dates

**Staff Training**  
May 31st - June 3rd  
Contact us for more information.

**High School**  
June 3rd - June 8th  
(Monday - Saturday)  
Entering grades 9 - 12 & graduates  
**\$70**

**Junior High**  
June 10th - June 15th  
(Monday - Saturday)  
Entering grades 6-8  
**\$65**

**Junior 1**  
June 17th - June 22nd  
(Monday - Saturday)  
Entering grades 3-6  
**\$65**

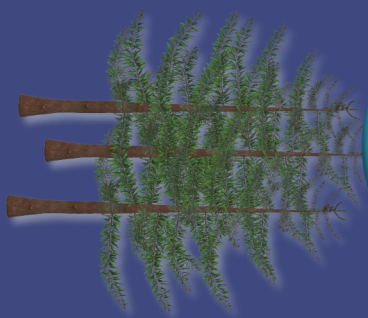
**Junior 2**  
June 25th - June 29th  
(Tuesday - Saturday)  
Entering grades 2-5  
**\$60**

**Register Online**  
[www.bethelbiblecamp.org](http://www.bethelbiblecamp.org)  
(or call 308-963-4334 to request paper forms)

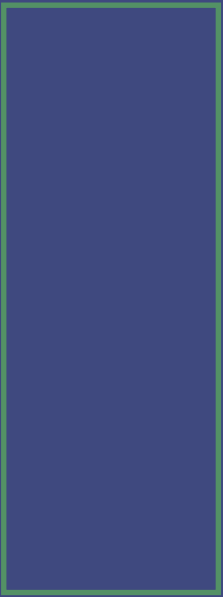
**Discounts**  
**Preregistration Discount: \$10**  
Pre-registrations must be postmarked or made online by May 25, 2024 to receive discount.  
There will be \$5 non-refundable fee on all preregistration fees.

**Family Discounts**  
2nd child: \$10 off  
3rd child or more: \$15 off

Scholarships are available for those who need it. Please contact for more information.



Bethel Bible Camp  
PO Box 40  
711 Mississippi Ave  
Wellfleet, NE 69170  
Phone: 308-963-4334  
Email: [camp@bethelbiblecamp.org](mailto:camp@bethelbiblecamp.org)  
[www.bethelbiblecamp.org](http://www.bethelbiblecamp.org)



Non-Profit  
Organization  
U.S. Postage  
Paid  
Permit #2



# 2024



A non-denominational Bible camp affiliated with

